

THINK **CONCRETE** THINK **CONSENT**



# INSPIRED BY NATURE

Producing coloured concrete products for over 40 years, Consent understands the effect colours can have on a space and with over 40 shades available to choose from, as well as the ability to match custom colours, we are confident that we have what you need.

PLEASE NOTE: Great care has been taken to capture the colours as closely as possible but due to different screens, colour differences may occur. Before specifying, we recommend you request for free samples to confirm your choice.

PHONE:  
**+971 4 3472011**

EMAIL:  
**[sales@consent.ae](mailto:sales@consent.ae)**



# CONSENT COLOUR GUIDE WITH SRI

## FOR SHOTBLAST FINISH - GRANIX



W11 - W(SNOW WHITE)

SRI - 84.5



W12 - W(COTTON WHITE)

SRI - 85.6



N32 - W(ITALIAN WHITE)

SRI - 71.9



N33 - W(DALMATION WHITE)

SRI - 57.8



N15 - W(ICE GREY)

SRI - 50.5



N04 - W(ALUMINA GREY)

SRI - 50.3



N34 - W(COBBLE GREY)

SRI - 38.4



N66 - W(NATURAL GREY)

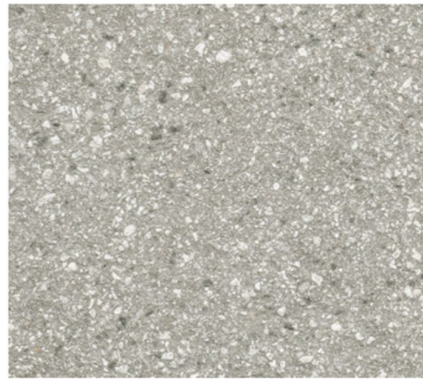
SRI - 24.7

# CONSENT COLOUR GUIDE WITH SRI

## FOR SHOTBLAST FINISH - GRANIX



N58 - W(SILVER GREY) SRI - 46.1



N69 - W(DOVE GREY) SRI - 43.4



N37 - W(CONSENT GRANITE) SRI - 36.1



K20 - W(INDUSTRIAL GREY) SRI - 21.2



K05 - W(ASH GREY) SRI - 22.1



C05 - W(EARL GREY) SRI - 21.7



C29 - W(CHARCOAL BLACK) SRI - 9.0



C31 - W(RAVEN BLACK) SRI - 8.9

# CONSENT COLOUR GUIDE WITH SRI

## FOR SHOTBLAST FINISH - GRANIX



S17 - W(LINEN BEIGE)

SRI - 52.9



S15 - W(SANDY BEIGE)

SRI - 48.5



S60 - W(SOFT BEIGE)

SRI - 46.4



S61 - W(CHAI BEIGE)

SRI - 46.1



B20 - W(BOSTON BROWN)

SRI - 33.3



T08 - W(VICTORIAN BEIGE)

SRI - 27.5



S05 - W(ANTIQUÉ BEIGE)

SRI - 28.3



S68 - W(HAZELNUT BEIGE)

SRI - 23.4

# CONSENT COLOUR GUIDE WITH SRI

## FOR SHOTBLAST FINISH - GRANIX



N44 - W(SANDY YELLOW) SRI - 73.0



N42 - W(DESSERT YELLOW) SRI - 66.1



X46 - W(WHEAT BEIGE) SRI - 59.2



S19 - W(NEUTRAL BEIGE) SRI - 43.8



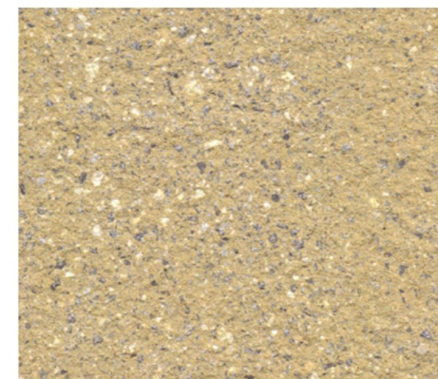
Y29 - W(STRAW YELLOW) SRI - 77.2



Y44 - W(SUNNY YELLOW) SRI - 72.9



Y42 - W(POLKA YELLOW) SRI - 61.6



T20 - W(GOLDEN TAN) SRI - 50.1

# CONSENT COLOUR GUIDE WITH SRI

## FOR SHOTBLAST FINISH - GRANIX



T16 - W(NATURAL TAN) SRI - 39.6



P26 - W(ROSE WOOD) SRI - 40.5



P06 - W(DUSKY ROSE) SRI - 25.1



R68 - W(CHERRY RED) SRI - 24.4



T44 - W(EARTH TAN) SRI - 64.6



T42 - W(SUMMER TAN) SRI - 62.1



T26 - W(SPOTTED TAN) SRI - 46.1



T69 - W(BRONZE TAN) SRI - 25.0

# CONSENT COLOUR GUIDE WITH SRI

## FOR SHOTBLAST FINISH - GRANIX



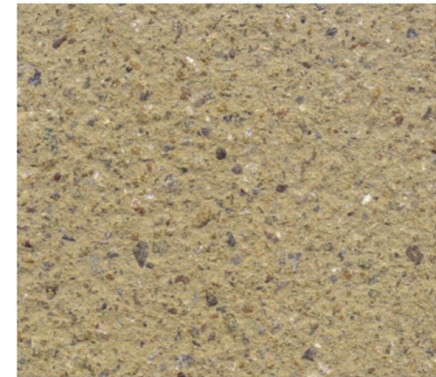
Y67 - W(RUSTIC YELLOW) SRI - 40.0



S76 - W(HONEY BEIGE) SRI - 37.6



Y04 - W(OLIVE YELLOW) SRI - 49.3



Y66 - W(HENNA YELLOW) SRI - 26.4



B66 - W(EARTH BROWN) SRI - 25.8



D68 - W(CHOCLATE BROWN) SRI - 19.4



D69 - W(COFFEE BROWN) SRI - 8.7



C66 - W(BLACK FOREST) SRI - 9.2